

Surveillance: Regional Coordination and Cooperation

Lisa Richards, MD MSc FRCPC

Surveillance and Epidemiology Expert
Lead for Pandemic H1N1 Influenza-
Manitoba Health and Healthy Living

Medical Officer of Health- Burntwood and
Churchill Regional Health Authorities

Surveillance

- Ongoing systematic **collection, analysis** and **interpretation** of data essential in planning, implementation and evaluation of public health practice, and the timely **dissemination** of these data to those who need to know.
 - CDC Atlanta

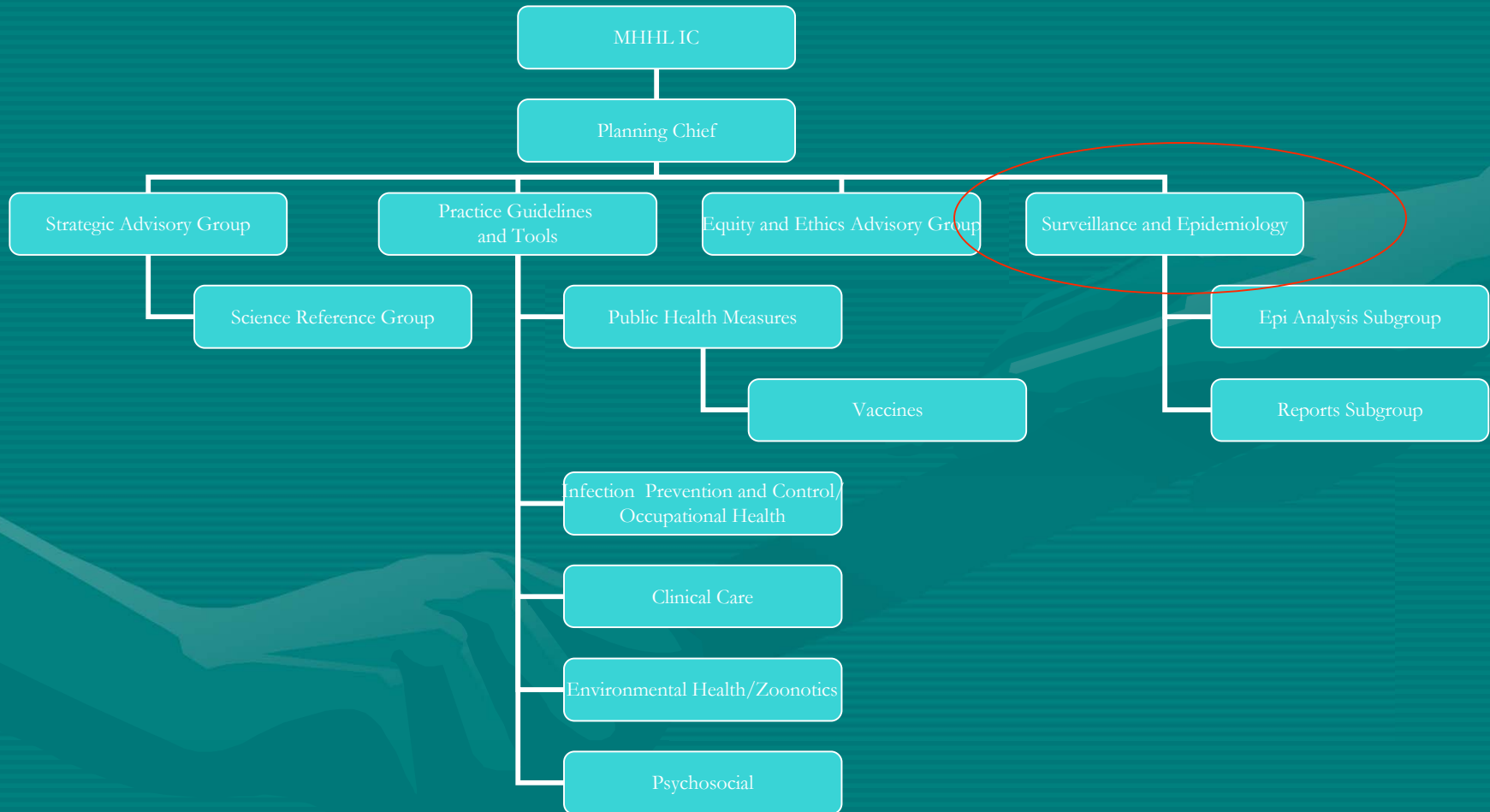
Overview

- MHHL Surveillance and Epidemiology Planning Table (Context)
- Relationships with other levels of government
- ‘Drivers’ for those relationships
- Successes
- Challenges

MHHL Surveillance and Epidemiology Planning Table

- Purpose
 - To provide advice and recommendations to the MHHL Planning Chief on surveillance and epidemiology issues
 - Collection
 - Analysis
 - Interpretation
 - Dissemination

MHHL Planning Section



MHHL Surveillance and Epidemiology Planning Table

- Membership
 - Includes experts in surveillance and epidemiology from:
 - MHHL
 - RHAs (Winnipeg, others)
 - FNIH
 - Other Planning Tables

Relationships

- National
 - FPT Surveillance and Epidemiology Group
 - PHAC- Epidemiologists
- Provincial
 - CPPHO and the Command Team
 - Operations
 - Other Planning Tables
- Regional
 - Regional Health Authorities
 - FNIH

'Drivers' for Cooperation

- Reporting requirements
 - P/Ts
 - PHAC
 - WHO- International Health Regulations
- Guides policy and practice
- Reduction in morbidity and mortality

Successes

- Federal
 - Biweekly FPT teleconferences
 - Good forum for updates and some discussion
 - Opportunity to hear/discuss challenges and potential solutions
 - PHAC Epidemiologists
 - At MHHL: data analysis (especially SRIs) and assisted with pandemic (H1N1) database development
 - At FNIH (Manitoba): Undertook a study in a remote FN community to better understand attack rates and risk groups for severe disease

Successes

- Provincial
 - Surveillance Unit
 - Rapid response to internal data requests
 - From CPPHO- to inform messaging to the public
 - From Planning Tables- to inform guidelines
 - Surveillance and Epidemiology Planning Table
 - Strong membership with active participation
 - Robust investigation form developed
 - Process developed to collect information on SRIs in ICUs

Successes

- Regional
 - Excellent cooperation with provincial reporting requirements- responses timely and accurate
 - Helpful feedback on pandemic (H1N1) case investigation form
 - Regional reports inform planning and response efforts

Challenges

- Federal
 - Biweekly FPT teleconferences
 - Large FPT group with relatively short biweekly meetings- leaves little time for discussion or debate
 - Pooled data analyses
 - Methodology is often not transparent resulting in challenges with interpretation

Challenges

- Provincial
 - Surveillance Unit
 - Human resources capacity stretched
 - Urgent data requests often interrupt other important work
 - Surveillance and Epidemiology Planning Table
 - Balancing Operations vs. Planning work
 - Decisions can be delayed if issues need to go to the Command Table

Challenges

- Regional
 - Public health nursing capacity was stretched to meet demand for completion of case investigation forms
 - Acute care- need for reallocation of human resources to do hospital screening for ILI, surveillance and investigation

Summary

- Many examples of how various levels of government cooperate and collaborate to meet common goals
- Some challenges remain, especially those pertaining to human resources capacity
- Overall a very robust system with good partnerships between various levels of government

Recommendation

That surveillance at the regional, provincial and national levels is **coordinated** efficiently and effectively...

so that **data and information exchange** is **facilitated**...

to **guide policy and practice** and **reduce morbidity and mortality**.

Thank-you

Manitoba Health and Healthy Living

Lisa.Richards@gov.mb.ca

(204)788-6375